

# CERTIFICATE OF LOCATION OF GOVERNMENT CORNER

E. 1/4 Corner of Section 36, Township 106, Range 43, 5 P.M.  
STATE OF MINNESOTA, County of MURRAY

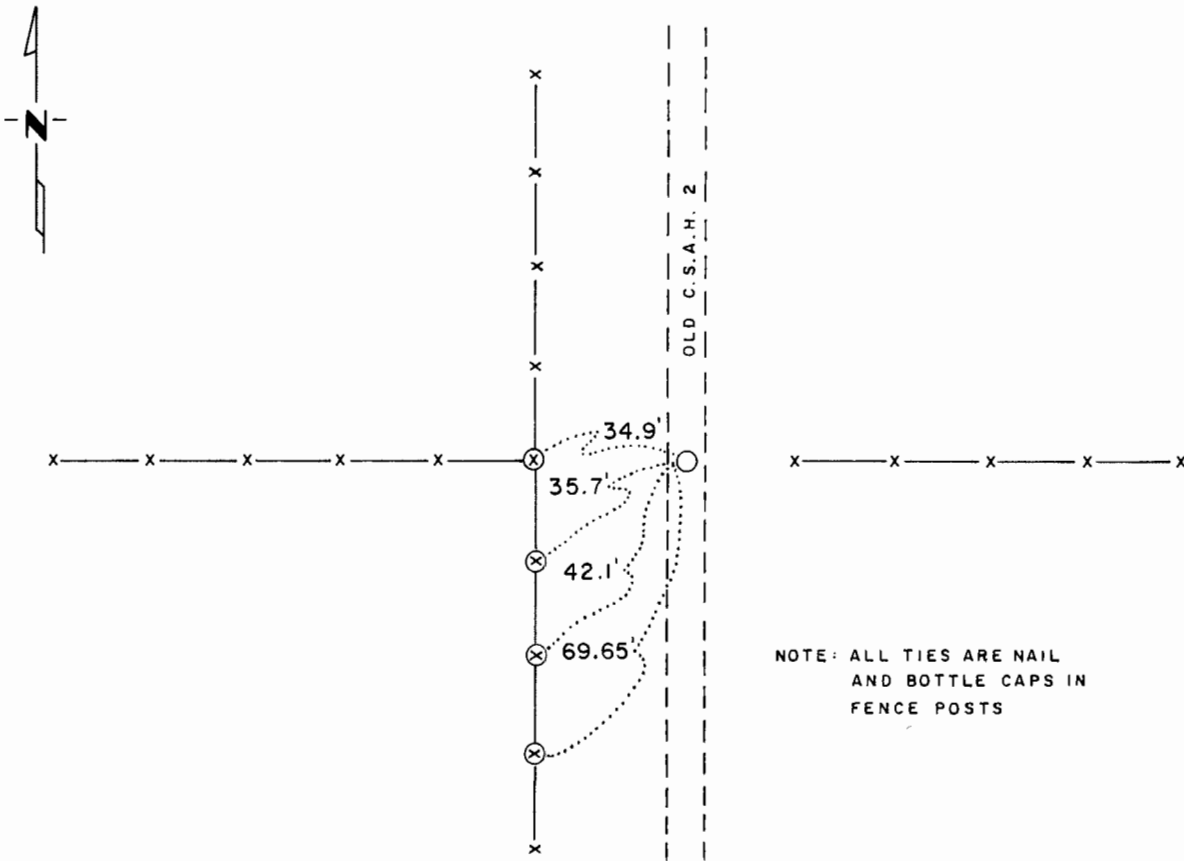
At the corner location shown on the sketch:

On Sept. 1973 found a Spike Inplace  
DATE

left monument as found,  lowered monument,  removed monument (explain)

On Sept. 1973 placed a 3/8" x 24" Iron Rod At Same Location As Spike  
DATE

### SKETCH OF REFERENCE TIES



NOTE: ALL TIES ARE NAIL AND BOTTLE CAPS IN FENCE POSTS

Statement of evidence relative to this corner location is on back of page.

I hereby certify that this document and the data contained herein was prepared by me or under my direct supervision.

Bert R. Eveland 7.19.80  
SIGNATURE DATE

Registration No. 10516

Land Surveyor,  Professional Engineer

County Surveyor,  County Engineer

OFFICE OF THE REGISTER OF DEEDS

County of Murray

I hereby certify that this document was filed in the Reg. of Deeds office at 8:30 A.M. on the 9th day of October A.D., 19 81

Register of Deeds Willard W. Orme

By \_\_\_\_\_, Deputy

DOCUMENT NO. 164608

Statement of Evidence:

MINNESOTA DEPARTMENT OF NATURAL RESOURCES, BUREAU OF ENGINEERING.

East Quarter Corner of Section 36, Township 106, Range 43, 5 P.M.  
Murray County.

Corner was originally established and monumented with a post by the Government Land Office in 1866. In July of 1953, the DNR Bureau of Engineering apparently assumed the corner during a survey in Section 31. The field notes for said survey do not indicate what procedures or evidences were used to determine said corner position nor do they indicate what was set.

In September, 1973, a Bureau of Engineering survey crew contacted the Register of Deeds and County Highway Offices but no helpful information was available. Could find no evidence of the original corner in the field. Also contacted Neil Sankey, approximately 58 years old and the owner of the East Half of the Northeast Quarter of Section 36. He knew of no established marker but felt the fence line to the west to be his south boundary.

Did not dig for corner since there is no record of it ever being monumented since the original survey and because of the lack of success in finding other quarter corners in the area.

Survey crew did find a spike with red cloth on it at the intersection of old C.S.A.H. #2 and fence lines east and west. Said nail was probably set during the 1953 survey. Accepted this as the true corner and replaced the spike with a 3/8" x 24" iron rod and set ties.